



SINGLE PHASE GLASS PASSIVATED BRIDGE RECTIFIERS

KBJ4005 THRU KBJ410

VOLTAGE RANGE

50 to 1000 Volts

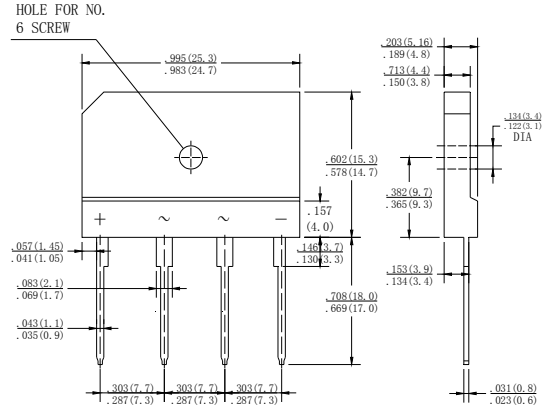
CURRENT

4.0 Ampere

FEATURES

- Ideal for printed circuit board
- Reliable low cost construction utilizing molded plastic technique
- High temperature soldering guaranteed: 250°C/10 seconds / 0.375"(9.5mm) led length at 5 lbs., (2.3kg)tension
- Small size, simple installation
- High surge current capability

GBJ4



Dimensions in inches and (millimeters)

MECHANICAL DATA

- Case : Molded plastic body
- Terminals : Plated leads solderable per MIL-STD-750, Method 2026
- Polarity : Polarity symbols marked on case
- Mounting Position : Any

MAXIMUM RATINGS AND ELECTRICAL CHARACTERISTICS

- Ratings at 25* ambient temperature unless otherwise specified.
- Single phase half-wave 60Hz, resistive or inductive load, For capacitive load derate current by 20%.

	SYMBOLS	KBJ 4005	KBJ 401	KBJ 402	KBJ 404	KBJ 406	KBJ 408	KBJ 410	UNITS
Maximum repetitive peak reverse voltage	V_{RRM}	50	100	200	400	600	800	1000	VOLTS
Maximum RMS voltage	V_{RMS}	35	70	140	280	420	560	700	VOLTS
Maximum DC blocking voltage	V_{DC}	50	100	200	400	600	800	1000	VOLTS
Maximum average forward rectified current	$I_{F(AV)}$	4.0							Amps
Peak forward surge current 8.3ms single half sine-wave superimposed on rated load (JEDEC Method)	I_{FSM}	120							Amps
Maximum instantaneous forward voltage drop per bridge element at 4.0A	V_F	1.0							Volts
Maximum DC reverse current at rated DC blocking voltage $T_A=25^{\circ}C$ $T_A=125^{\circ}C$	I_R	5 500							μA
Operating temperature range	T_J	-55 to +150							$^{\circ}C$
storage temperature range	T_{STG}	-55 to +150							$^{\circ}C$



SINGLE PHASE GLASS PASSIVATED BRIDGE RECTIFIERS

KBJ4005 THRU KBJ410

VOLTAGE RANGE

50 to 1000 Volts

CURRENT

4.0 Ampere

FIG.1-MAXIMUM NONO-REPETITIVE FORWARD SURGE CURRENT PER BRIDGE ELEMNT

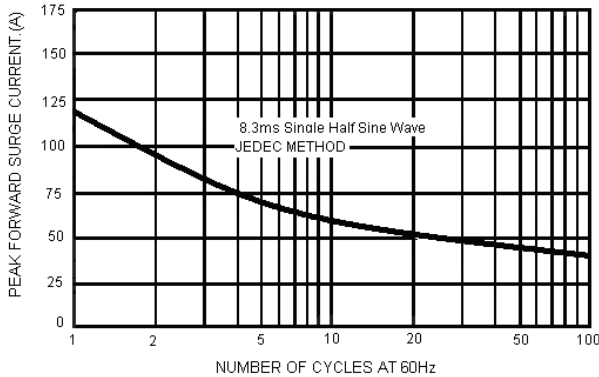


FIG.2-MAXIMUM FORWARD CURRENT DERATING CURVE

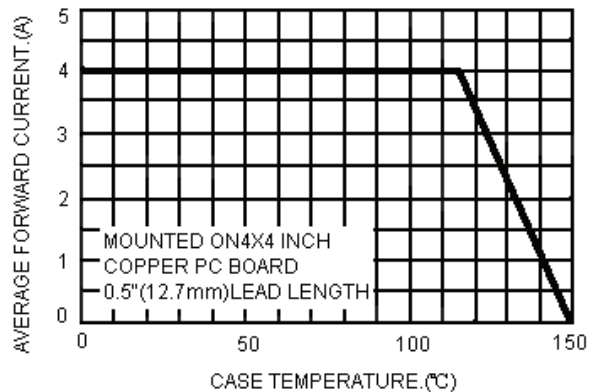


FIG.3-TYPICAL INSTANTANEOUS FORWARD CHARACTERISTICS PER BRIDGE ELEMENT

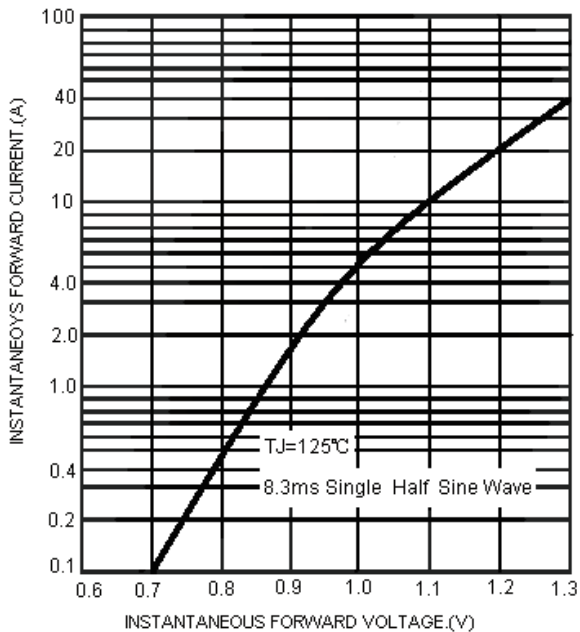


FIG.4-TYPICAL REVERSE CHARACTERISTICS PER BRIDGE ELEMENT

