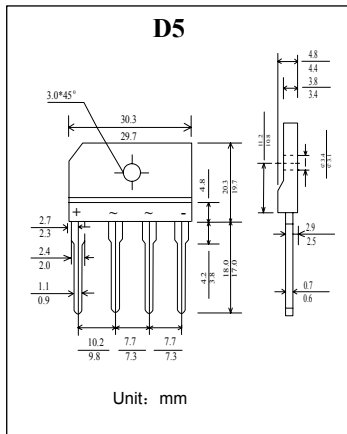


# T15XB60

Reverse Voltage 600 V  
Forward Current 15 A



## 特征 Features

- 低的反向漏电流 Low reverse leakage
- 较强的正向浪涌承受能力 High forward surge capability
- 浪涌承受能力: 200 A Surge overload rating: 200 Amperes peak
- 引线 and 管体皆符合RoHS标准。  
Lead and body according with RoHS standard

## 机械数据 Mechanical Data

- 封装: 塑料封装 Case: Molded Plastic
- 极性: 标记模压或印于本体 Polarity: Symbols molded or marked on body
- 安装位置: 任意 Mounting Position: Any

**极限值和温度特性** TA = 25°C 除非另有规定。

**Maximum Ratings & Thermal Characteristics** Ratings at 25°C ambient temperature unless otherwise specified.

	符号 Symbols	T15XB60	单位 Unit
最大可重复峰值反向电压 Maximum repetitive peak reverse voltage	V <sub>RRM</sub>	600	V
最大均方根电压 Maximum RMS voltage	V <sub>RMS</sub>	420	V
最大直流阻断电压 Maximum DC blocking voltage	V <sub>DC</sub>	600	V
最大正向平均整流电流 Maximum average forward rectified current	I <sub>F(AV)</sub>	15	A
峰值正向浪涌电流 8.3ms单一正弦半波 Peak forward surge current 8.3 ms single half sine-wave	I <sub>FSM</sub>	200	A
典型热阻 Typical thermal resistance	R <sub>θJA</sub>	22	°C/W
工作结温和存储温度 Operating junction and storage temperature range	T <sub>J</sub> , T <sub>STG</sub>	-55 --- +150	°C

**电特性** TA = 25°C 除非另有规定。

**Electrical Characteristics** Ratings at 25°C ambient temperature unless otherwise specified.

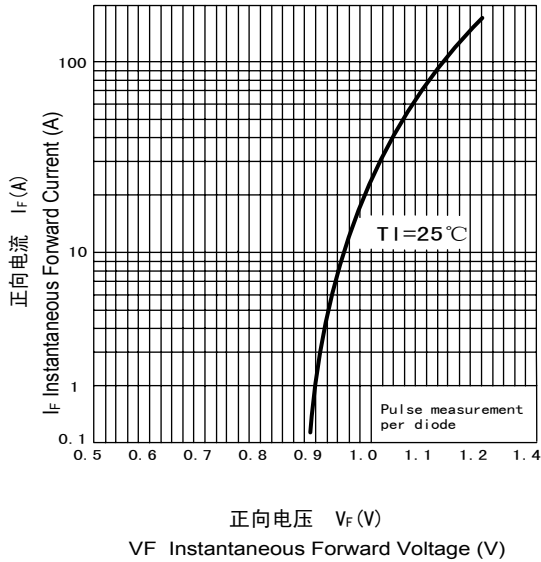
	符号 Symbols	T15XB60	单位 Unit
最大正向电压 Maximum forward voltage	I <sub>F</sub> = 7.5A V <sub>F</sub>	1.1	V
最大反向电流 Maximum reverse current	TA = 25°C TA = 100°C I <sub>R</sub>	10 500	μA
典型结电容 Type junction capacitance	V <sub>R</sub> = 4.0V, f = 1MHz C <sub>j</sub>	40	pF

# T15XB60

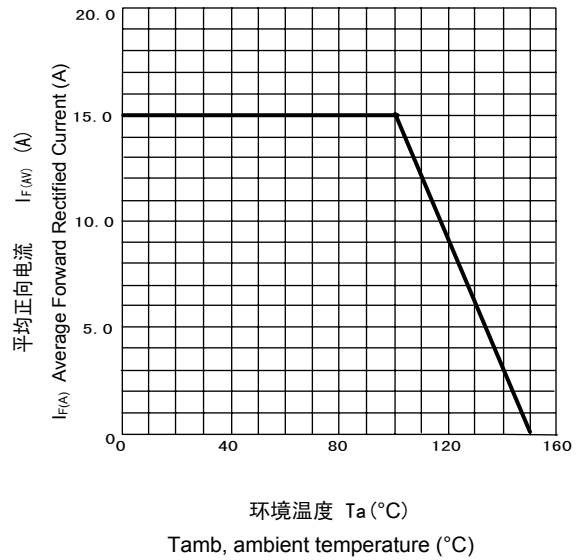
Reverse Voltage 600 V  
Forward Current 15 A

## Characteristic Curves

正向特性曲线 (典型值)  
TYPICAL FORWARD CHARACTERISTIC



正向电流降额曲线  
FORWARD CURRENT DERATING CURVE



浪涌特性曲线 (最大值)  
MAXIMUM NON REPETITIVE  
PEAK FORWARD SURGE CURRENT

